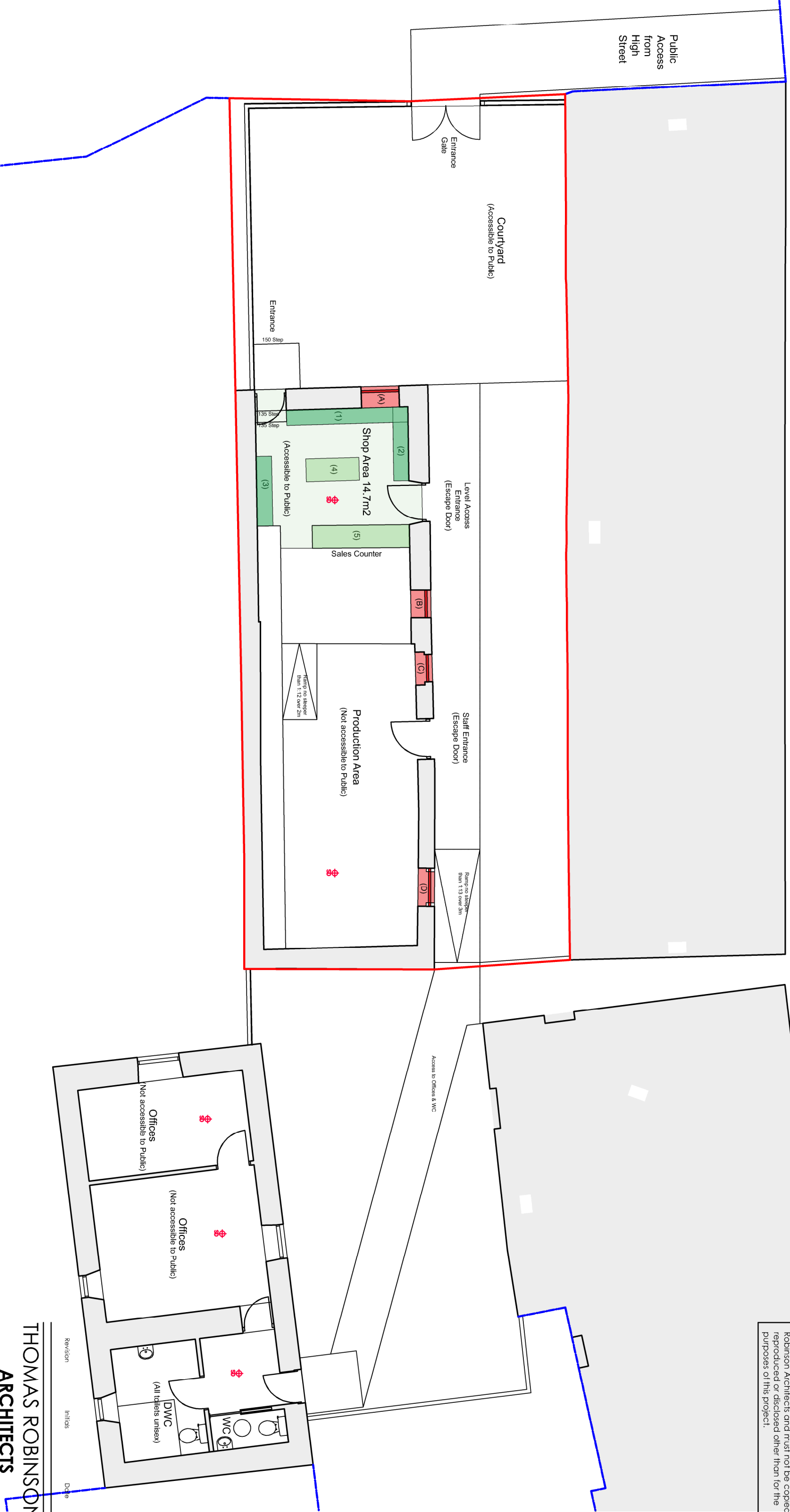


High Street

Public Access from High Street



Do not scale from this drawing. If in doubt, ask. This drawing is the property of Thomas Robinson Architects and must not be copied, reproduced or disclosed other than for the purposes of this project.

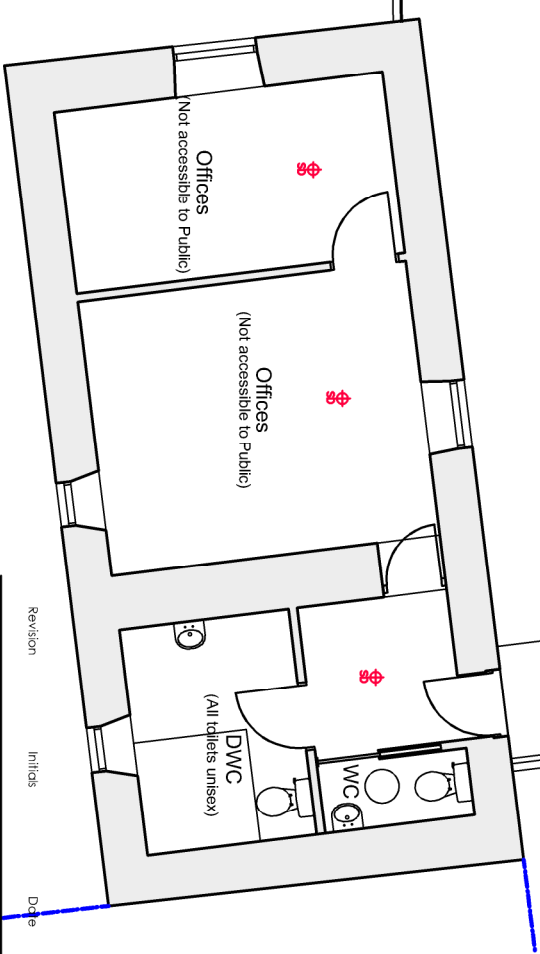
Notes:

All escape doors to be provided with escape lighting to comply with BS 5266: Part 1: 2016.

Provision fire detection layout shown. A full Fire Risk Assessment to be taken before application for Full License. All fire detectors to comply with BS 5839: Part 1: 2017.

Activities will occur as per the approved operating plan and children and young persons will have access to all public parts (but not allowed to remain at any bar) per the approved operating plan.

Sales / tasting area hatched in light green. Display areas indicated below.		
Window Display (marked in red hatch)	Internal Display Shelves (marked in dark green hatch)	Internal Display Counters (marked in light green hatch)
Maximum Frontage Dimensions (m):	Maximum Frontage Dimensions (m):	Maximum Dimensions (m):
(A) 1.2w x 1.8h	(1) 3.2w x 2.1h	(4) Display Table
(B) 0.8w x 1.2h	(2) 2.0w x 2.1h	1.4w x 0.6d x 1.2h
(C) 0.8w x 1.5h	(3) 1.8w x 2.1h	(5) Display Counter
(D) 1.0w x 2.1h		2.6w x 0.9d x 2.1h



THOMAS ROBINSON ARCHITECTS

THE RED HOUSE, CROFTFAMIE, GARGOW, G43 8EU
 TEL: 01360 661144 FAX: 01360 661122
 email: info@thomasrobinsonarchitects.co.uk
 www.thomasrobinsonarchitects.co.uk

JOB TITLE
Isle of Bute Distillery

DRAWING TITLE
Ground Floor Plan

SCALE	DATE	DRAWING/CHECKED
1:100	20/08/2019	MP MP
JOB NO.	DRAWING NO.	REVISION
0916	300	C